

## Exchange Rates

US L.I.B.O.R. -	0.123	0.0%
BRENT CRUDE OIL	64.41	-0.5%
GBP / USD -	1.55040	0.9%
USD / JPY -	123.69	-0.4%
USD / NOK -	7.78231	0.2%
USD / EURO -	0.89280	0.7%
EURO / USD -	1.12	-0.7%
USD / KRW -	1110.86	-0.9%
GBP / EURO	1.38412	1.6%
USD / RMB -	6.09696	-1.8%

## FFA Capesize

<b>Average of the T/C Routes</b>	<b>8116</b>	<b>+</b>
July '15	8975	+
Aug '15	9700	+
Q3'15	10250	+
Q4'15	14725	+
Cal 16	11975	+

## FFA Panamax

<b>Average of the T/C Routes</b>	<b>7235</b>	<b>+</b>
July '15	7700	+
Aug '15	7425	+
Q3'15	7550	+
Q4'15	8025	+
Cal 16	7100	+

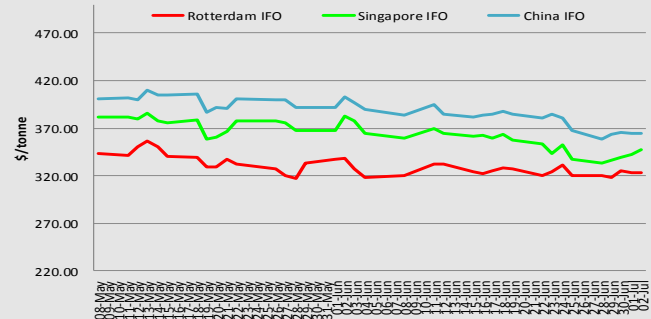
## FFA Supramax

<b>Average of the T/C Routes</b>	<b>7490</b>	<b>+</b>
July '15	8225	+
Aug '15	8175	+
Q3'15	8175	+
Q4'15	8800	+
Cal 16	7750	+

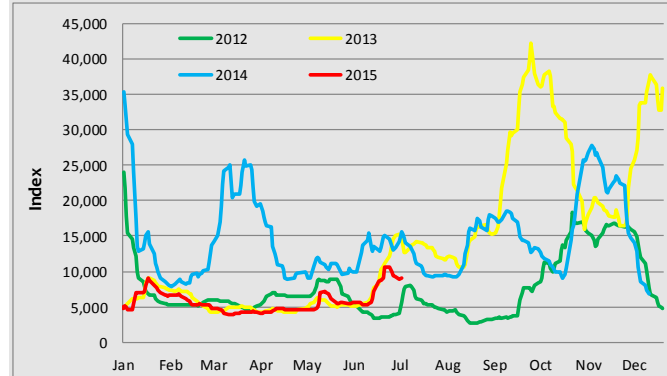
## FFA Handy

<b>Average of the T/C Routes</b>	<b>5331</b>	<b>+</b>
July '15	5550	+
Aug '15	5475	+
Q3'15	5575	+
Q4'15	6300	+
Cal 16	6275	+

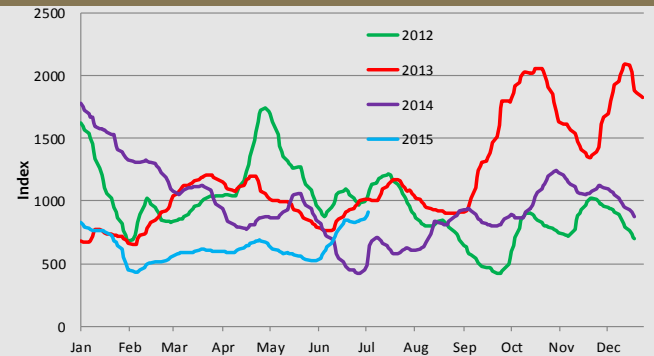
## Bunkers



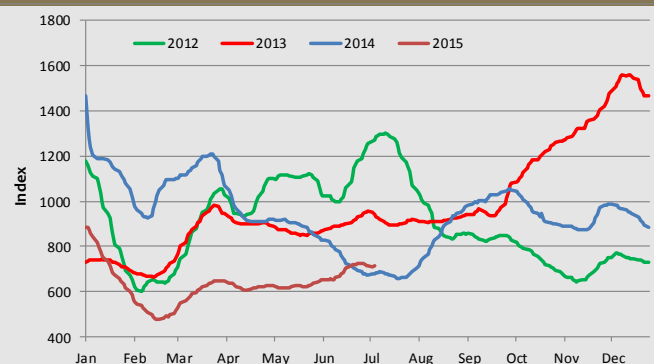
## BCI



## BPI



## BSI





Panamax Routes		01-May	08-May	15-May	22-May	29-May	05-Jun	12-Jun	19-Jun	26-Jun	03-Jul
T/A RV	Murmansk-Rott	6.40	6.05	5.80	5.50	5.15	5.55	6.30	7.45	6.75	6.90
	Hampton Roads-Rott	8.25	8.00	7.95	7.50	7.35	7.75	8.25	10.70	10.25	10.00
	Bolivar-Rott	8.50	8.40	8.10	7.25	6.75	8.10	9.75	11.10	10.65	11.45
	Mobile-Rott	10.75	10.65	10.30	9.40	8.80	10.00	10.60	12.00	11.50	12.40
Pac RV	Roberts Bank-Qingdao	9.30	9.10	9.70	9.55	9.00	9.25	9.75	9.85	9.55	9.90
	Newcastle-Qingdao	8.10	8.40	8.95	8.80	8.45	8.55	9.00	9.35	8.80	9.00
	Indo (Terminal)-Qingdao	4.70	4.90	5.20	5.15	5.00	5.00	5.30	5.65	5.35	5.35
	Richards Bay-Qingdao	10.15	10.60	10.65	10.50	10.50	10.85	11.50	11.70	11.10	11.80
Fronthaul	Bolivar-Qingdao	19.20	18.95	17.60	17.30	17.60	18.60	20.00	21.10	20.50	22.00
	Hampton Roads-Qingdao	21.00	20.70	19.10	18.30	18.80	19.60	21.00	21.70	21.40	22.60
	Miss River-Qingdao	22.25	21.90	20.55	20.25	20.60	21.40	22.85	23.95	23.35	25.40
Backhaul	Richards Bay-Rott	8.00	8.25	8.00	7.50	7.90	8.35	8.50	8.75	8.30	8.45
	Indo (Terminal)-Rott	9.90	10.95	10.70	10.50	10.45	10.45	10.60	10.65	10.05	10.10
	NSW-Rott	11.10	12.35	12.05	11.80	11.80	11.75	11.90	12.00	11.30	11.35
	Roberts Bank-Rott	14.00	14.95	14.75	14.50	14.40	14.35	14.90	14.85	14.45	14.30
	Rizhao-Rott	10.00	11.10	10.80	10.60	10.60	10.55	10.70	10.75	10.15	10.20
	Queensland-Rott	12.00	13.30	13.00	12.70	12.75	12.70	13.25	13.00	11.80	12.25

Capesize Routes		01-May	08-May	15-May	22-May	29-May	05-Jun	12-Jun	19-Jun	26-Jun	03-Jul
T/A RV	Bolivar-Rott	5.45	5.60	6.30	5.50	5.50	5.75	5.75	6.90	7.10	6.90
Pac RV	Roberts Bank-Qingdao	650.00	6.70	8.20	7.00	7.90	7.70	7.00	8.00	8.90	8.00
	Newcastle-Zhoushan	7.00	7.30	7.60	7.50	7.60	7.50	7.45	7.90	8.10	7.50
	Gladstone-Qingdao	5.00	6.50	7.20	6.70	7.10	7.15	7.10	8.00	8.30	7.70
	Taboneo-Krishnapt	4.15	4.25	5.00	4.50	4.80	4.85	4.80	5.00	5.00	4.80
	Richards Bay-Fangcheng	6.20	7.00	7.90	7.60	7.40	7.20	6.75	8.50	8.70	7.95
Fronthaul	Baltimore-Qingdao	18.50	18.75	18.80	18.60	18.50	18.60	18.20	18.50	18.70	18.40
Backhaul	Richards Bay-Rott	4.20	5.00	5.80	5.15	5.00	5.00	4.95	5.80	6.00	5.80
	Haypoint-Rott	6.50	6.95	7.75	7.25	7.50	7.50	7.90	8.50	8.70	8.00

Supramax Routes		T/C Last Year		T/C Last Week		T/C	+ or - from last week
		15/6/14	8/6/15	15/6/15			
Atlantic	S1A CONT/FEAS	12200	9108	8992	-116		
	S1B BSEA/FEAS	10178	8250	7750	-500		
	S4A USG/CONT	9267	10293	12064	1771		
	S4B CONT/USG	4328	3508	3392	-116		
	S5 WAFR/FEAS	11658	7000	7170	170		
	S9 WAFR/CONT	6318	4150	4185	35		
Pacific	S2 FEAS RV	7850	6408	6621	213		
	S3 FEAS/CONT	5958	5440	5620	180		
	S7 EC Ind - China	N/A	N/A	N/A			
	S8 IND/ECI	7256	6279	6466	187		
	S10 N - S China	5065	4425	4606	181		
S11 M Ch / Aus r	7000	6007	6196	189			
AVG all T/C	7949	6559	7085	526			